

## PRICE LIST 2024 Q2

---




Extensions for  
Dynamics 365 Business Central &  
Connector-Apps

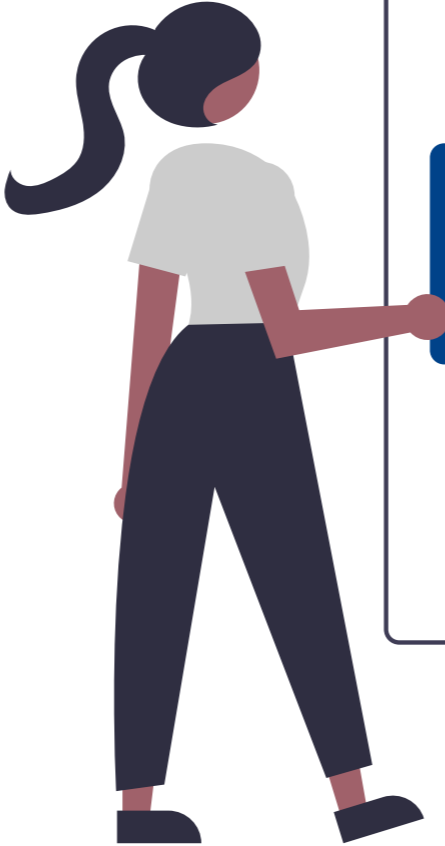
Software as a Service (SaaS)

South Africa (ZA)



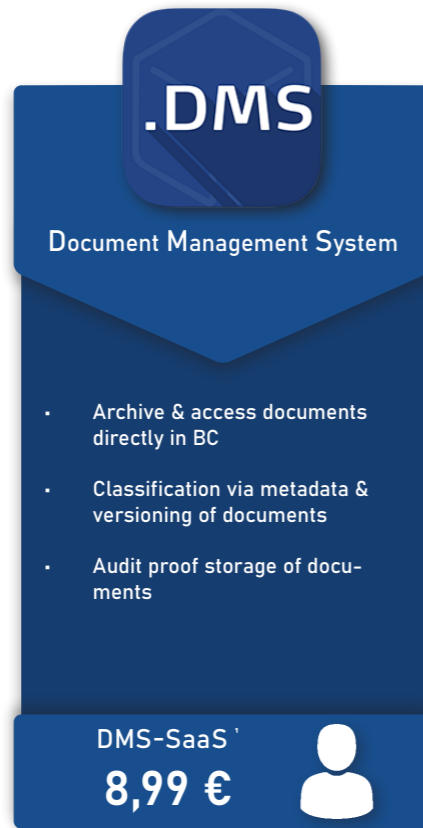
# TABLE OF CONTENTS

- SaaS | Pricing for DMS  03
- SaaS | Pricing for Document Inbound  04
- SaaS | Pricing for EDS & XSD  05
- SaaS | Pricing for DPS  06
- SaaS | Pricing for CTI & DVS  07
- SaaS | Pricing for DMS to DPS & DMS to EDS  08
- SaaS | Pricing for DMS to DC & DVS to DC  09
- SaaS | Product Bundles 10
- SaaS | Billing discounts 11
- SaaS | Pricing information 12
- | Services 13




## Software as a Service (SaaS) Licensing

Licensing is per user.



**.DMS**  
Document Management System

- Archive & access documents directly in BC
- Classification via metadata & versioning of documents
- Audit proof storage of documents

DMS-SaaS<sup>1</sup>  
**8,99 €** 

<sup>1</sup> The Simova document management solution interacts with Microsoft SharePoint or Azure Blob Storage as a repository. The Microsoft SharePoint environment or Azure subscription must be licensed separately. The IT department of the end customer of the related partner must take care of this.

The following versions of Microsoft SharePoint are supported:

Microsoft SharePoint Server (On-Premise)

- Version 2019
- Standard or Enterprise Edition (2019)

Microsoft SharePoint Online


- Integrated with Microsoft O365. Please check if your Microsoft O365 plan includes SharePoint Online.

Microsoft SharePoint Server resides in a hosted environment.



## Software as a Service (SaaS) Licensing

Licensing is per transaction per month.



**.DI**

Document Inbound for  
DMS by Simova

- Modern way of handling incoming documents
- QR Code, filename and subject recognition from email inbox or scanner
- Automatic return of documents to related processes

DI-SaaS<sup>2</sup>  
per transaction 

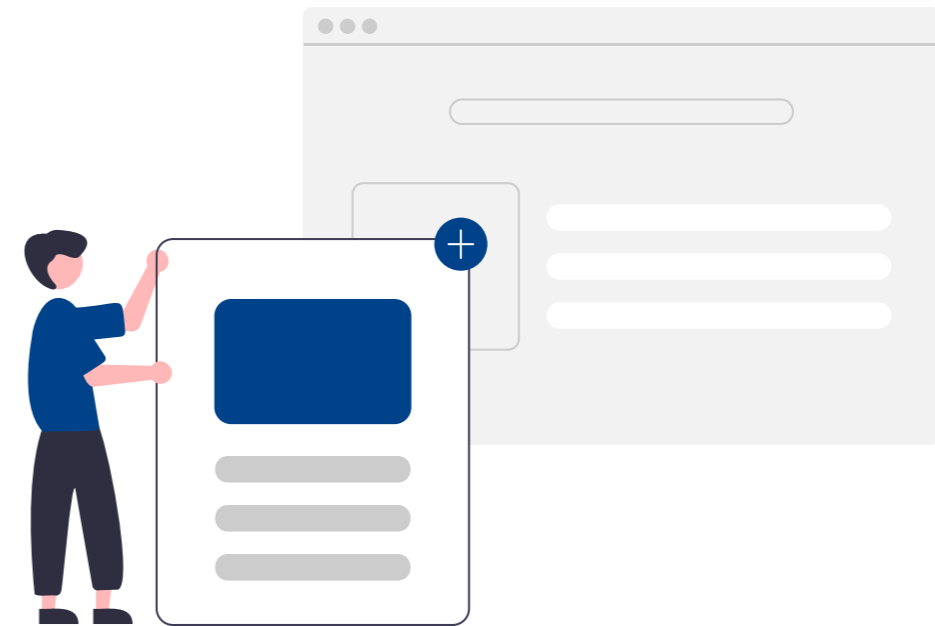
Number of transaction	up to 100	up to 500	up to 1.000	up to 2.500	up to 5.000	up to 40.000	up to 100.000	up to 150.000	up to 200.000	up to 250.000	over 250.000
Price per transaction	0,11€	0,10€	0,09€	0,08€	0,07€	0,06€	0,05€	0,04€	0,03€	0,02€	0,01€

All prices net excl. VAT per month

<sup>2</sup> Number of transactions are tracked by Simova API and billed at the end of the month according to actual transaction count. Simova API only tracks transaction count and does not conflict with any privacy concern regarding sensible information. Find detailed information on transactions on our website at [www.simova.de/pricing](http://www.simova.de/pricing).

Document Inbound process	Transaction count
Barcode / QR code recognition (per code)	1
Manual document split / merge	1
Return via file name	1
Return via email address	1

**Example:** Splitting up a file of 5 documents with separate QR codes and returning them will count as 5 transactions.



## Software as a Service (SaaS) Licensing

EDS licensing is per user. XML Update Professional licensing is per customer per format (XRechnung, ZUG-FeRD, Peppol, etc.).

**.EDS**

Electronic Delivery Solution

- Automatic dispatch of documents directly from BC
- Future-proof through electronic invoicing with standard XML formats, such as ZUG-FeRD, XRechnung or Peppol
- Customizable email templates and placeholders in email texts

EDS-SaaS<sup>3</sup>

**8,99 €** 

**.XSD**

XML Update Professional

- Latest standard configurations for the respective format
- Base to configure your own schemas & individualization
- Security for less than 1€ a day per schema
- Available for ZUGFeRD, XRechnung & Peppol (coming soon)

XML-Update-Prof<sup>4</sup>

**22,49 €** /Format 

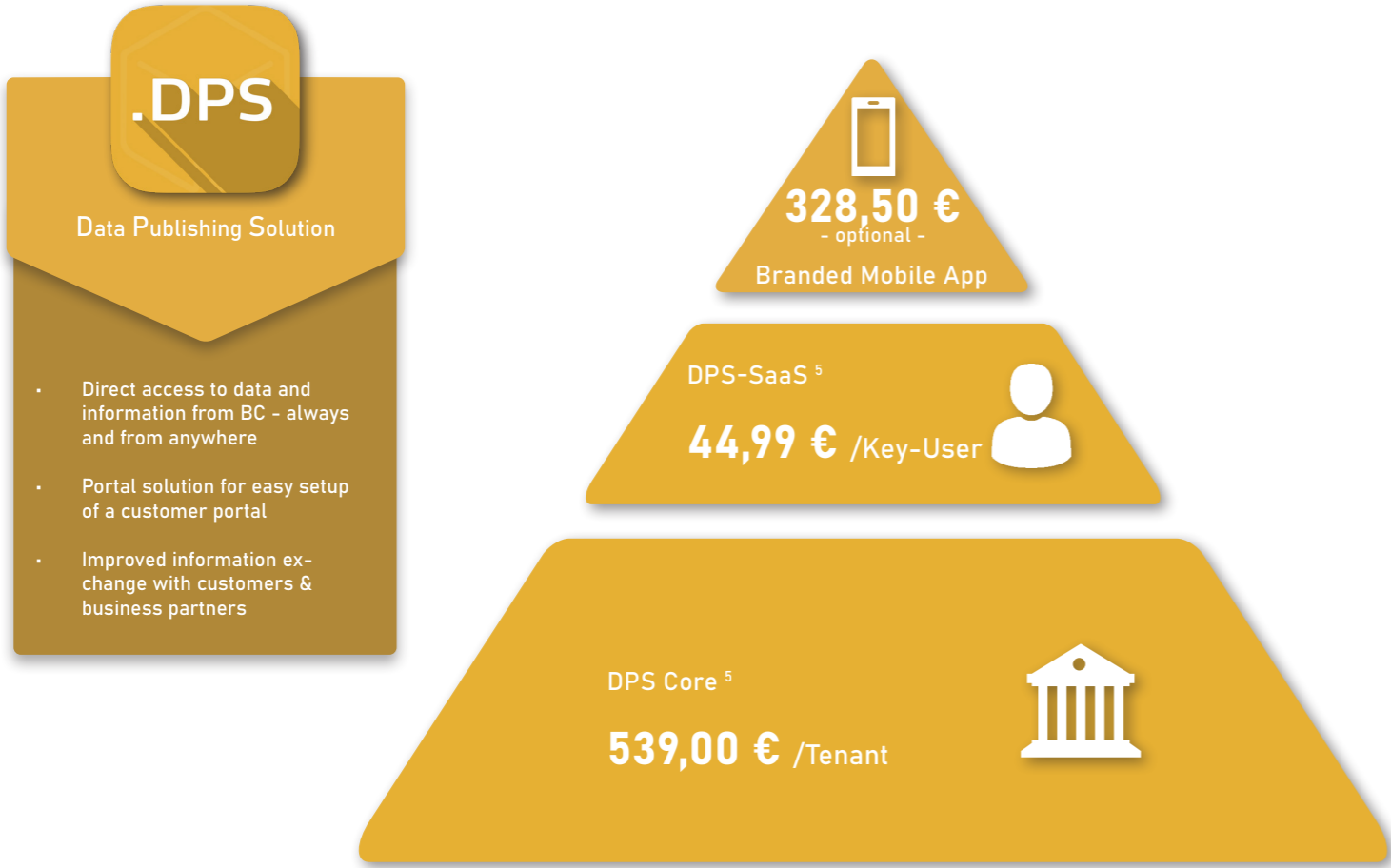
<sup>3</sup> Simova offers only the license and configuration of the product EDS. For the implementation, a completely pre-configured email server is required. This must be licensed and configured separately.

<sup>4</sup> Simova provides new versions of standard formats by the time they reach their legal validity. The configurations are for the Business Central Standard. Assistance with adaptations to vertical solutions or the configuration of individual XML nodes remain accountable services. The Simova XML Update Professional package is optional.



### Software as a Service (SaaS) Licensing

Licensing is module based and additional key-users are licensed. The number of user licenses depends on how many users should be able to adjust portal settings and handle processes triggered in the portal. Branded Mobile App is an optional feature.



<sup>5</sup> The Simova Data Publishing Solution (portal solution) requires either the Microsoft Internet Information Services (IIS) service or an Azure Subscription. The IIS service is a role of the Microsoft Windows Server. The Microsoft Windows Server must be licensed separately. With an Azure Subscription the whole DPS portal can be hosted in the Azure environment of the portal provider. The Azure Subscription is not included in the DPS pricing.  
DPS Core pricing is per productive environment on the tenant. Additional productive environments can be licensed for 44,99€ / additional productive environment.



### Software as a Service (SaaS) Licensing

Licensing is per user.

**.CTI**

Computer Telephony Integration

- Call detection and display of contact information
- Clear and convenient information provision for incoming or outgoing calls through direct display in Business Central
- More time to focus on essential tasks

CTI-SaaS <sup>6</sup>


**6,29 €** 

**.DVS**

Digital Verification Solution

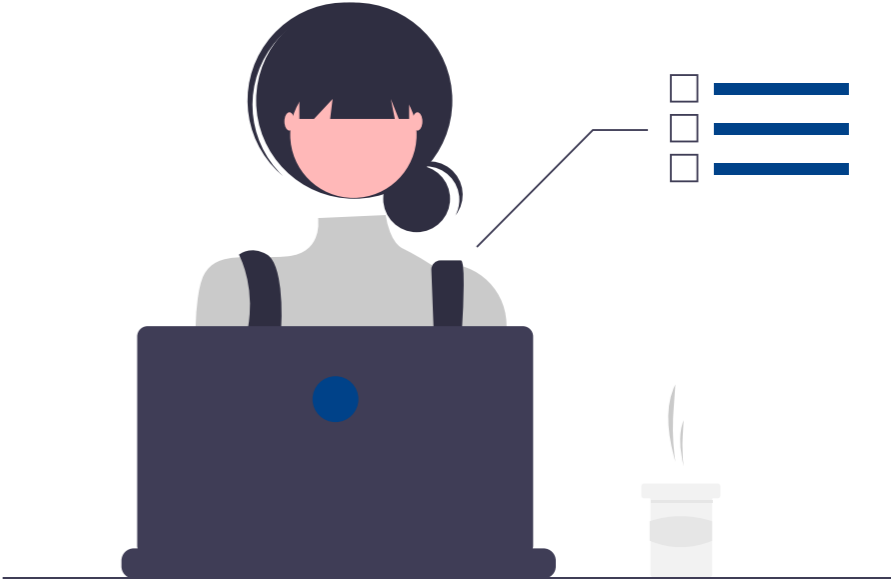
- Distribute questions, information & tasks directly in BC
- Safeguarding of workflows through transparent overview of all process statuses and responsibilities
- Quick exchange of information among employees and team members

DVS-SaaS <sup>7</sup>

**6,29 €** 

<sup>6</sup> The configuration of the respective telephone systems must be carried out by the end customer's IT service provider. The telephone systems (TAPI-enabled or Microsoft Teams) must be licensed separately.

<sup>7</sup> Simova offers only the license and configuration of the product DVS. If you want to use the notification function, an already pre-configured email server is required.



Software as a Service (SaaS) Licensing

Licensing for DMS to DPS is module based. Licensing for DMS to EDS is per user.


**.DMS to DPS**

DMS to DPS Connector

- Connect document management system with the portal solution
- Make documents from your DMS available in the portal
- No duplicate data storage due to direct provision from the DMS

DMS to DPS-SaaS<sup>8</sup>

**44,99 €**



**.DMS to EDS**

DMS to EDS Connector

- Connect document management system with the digital shipping solution
- Send documents from the DMS directly via EDS
- No need to manually upload files to email or database

DMS to EDS-SaaS<sup>9</sup>

**2,29 €**



<sup>8</sup> For the DMS to DPS Connector, both DMS by Simova and DPS by Simova must be licensed.

<sup>9</sup> For the DMS to EDS Connector, both DMS by Simova and EDS by Simova must be licensed.





**SIMOVA CONNECTOR APPS** //

Software as a Service (SaaS) Licensing

Licensing is per user.

**.DMS**  
to DC

DMS to DC Connector

- Automatic archiving of registered documents
- Audit-proof storage on request
- Store receipts optionally after registration or posting

DMS to DC-SaaS <sup>10</sup>

**2,29 €** 

**.DVS**  
to DC

DVS to DC Connector

- Create process-related questions, information or tasks directly on registered documents
- Improve internal communication in incoming invoice processes
- Increase process reliability and transparency

DVS to DC-SaaS <sup>11</sup>

**1,29 €** 

<sup>10</sup> For the DMS to DC Connector, both DMS by Simova and Document Capture by Continia must be licensed.

<sup>11</sup> For the DVS to DC Connector, both DVS by Simova and Document Capture by Continia must be licensed.



# SIMOVA PRODUCT BUNDLES


Give your Business Central the power boost it deserves!

One Simova extension is not enough for your or your customers needs? Consider to order them in a bundle and save cash.

2 Product bundle

- Use two Simova basic products\*
- Benefit from cross-product interfaces
- Accelerate your business processes by automating work steps

Save **5%** on the monthly subscription costs! <sup>12</sup>



3+ Product bundle

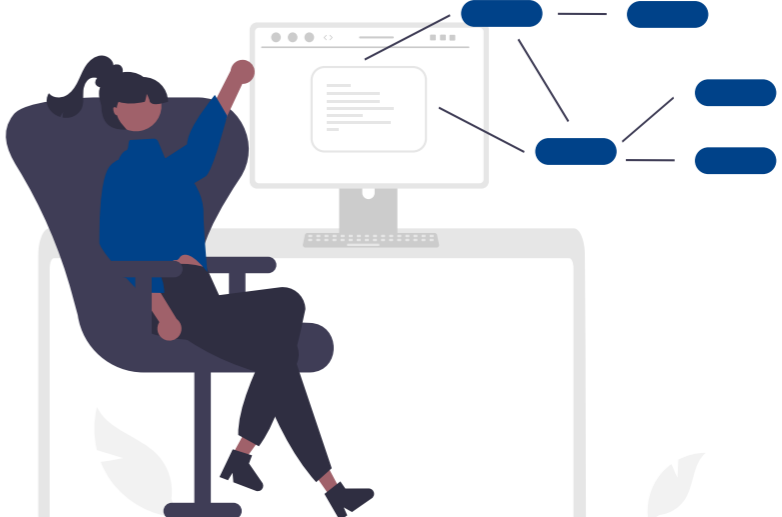
- Use three or more Simova basic products\*
- Benefit from cross-product interfaces
- Accelerate your business processes by automating work steps

Save **15%** on the monthly subscription costs! <sup>12</sup>



<sup>12</sup> Simova Connector Apps must be purchased additionally if desired. Bundle discount is also applied to Connector Apps by Simova.

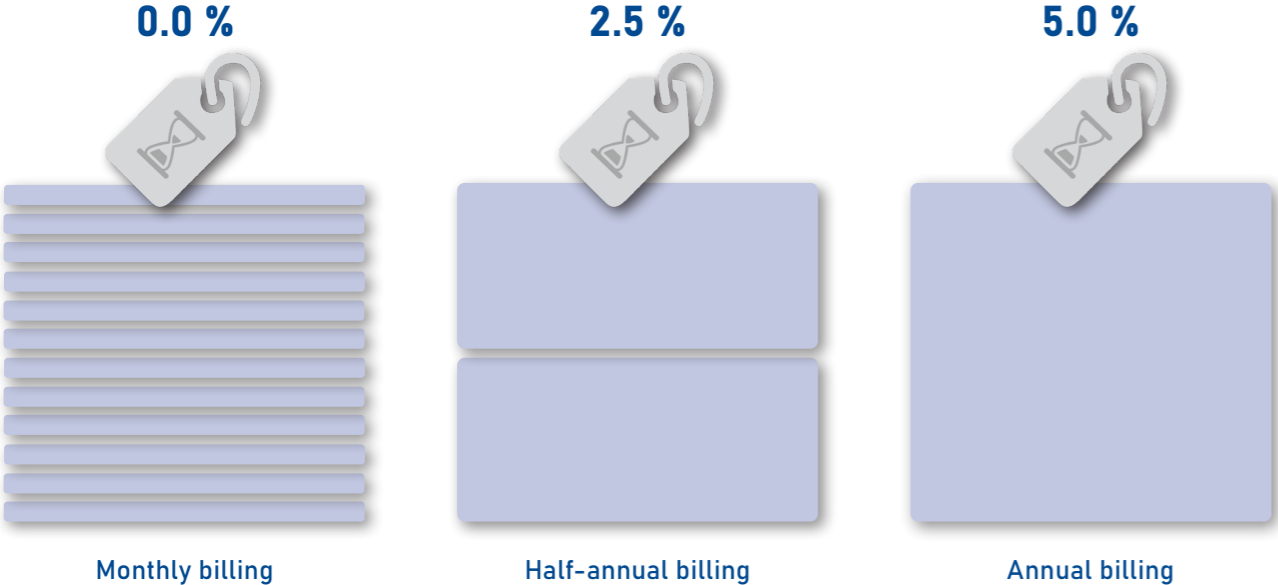
\* Simova basic products are CTI by Simova, DMS by Simova, DVS by Simova, EDS by Simova & DPS by Simova



# BILLING DISCOUNTS

## Discounts for half-annual and annual billing

Get up to 5 % discount for extending the billing period. This saves resources for the customer, the partner and for Simova. Invoices do not have to be created and processed every month.



## PRICING INFORMATION

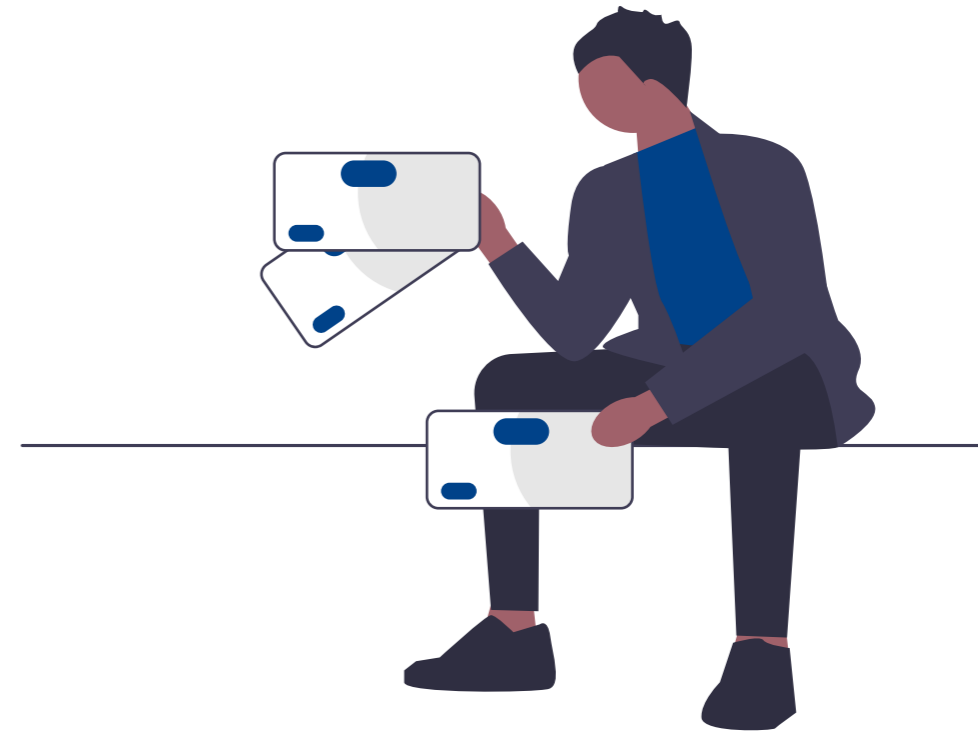
### General pricing information

All prices are per tenant. **Additional productive environments** must be licensed for 44,99€ / each.  
All prices are subject to change within 30 days without notice.

### Contract & notice periods

Duration: First 12 months mandatory + automatic renewal depending on billing cycle

Notice period: 1 month before next billing cycle



# SERVICES

## Service | Standard resources

The following prices apply to the performance of services by Simova GmbH, such as project management/ coordination, consulting or development.



€/h

**166 €**

DL-CON

Service of an employee of Simova GmbH



## Service | Travel

**Travel costs per km and hour.** Costs for accommodation and means of travel such as flight or train will be charged additionally. There is also the possibility for a travel flat rate for one or two Simova employees.

**Other incidental expenses/expenses** for public transportation, lodging, and other expenses as documented.



€/km

DL-RK-KM

**0,72 €**



€/h/Employee

DL-RK-STD

**81 €**



€/d/Employee

DL-SP

**25 €**

All prices are net excl. of VAT.



Simova GmbH | Stockholmer Allee 30a | D-44269 Dortmund  
+49 231 31776 448 | [sales@simova.de](mailto:sales@simova.de) | [www.simova.de](http://www.simova.de)